

VRp-ILc-15000-30000 Outdoor Versions PCB Replacement Instructions

Step 1

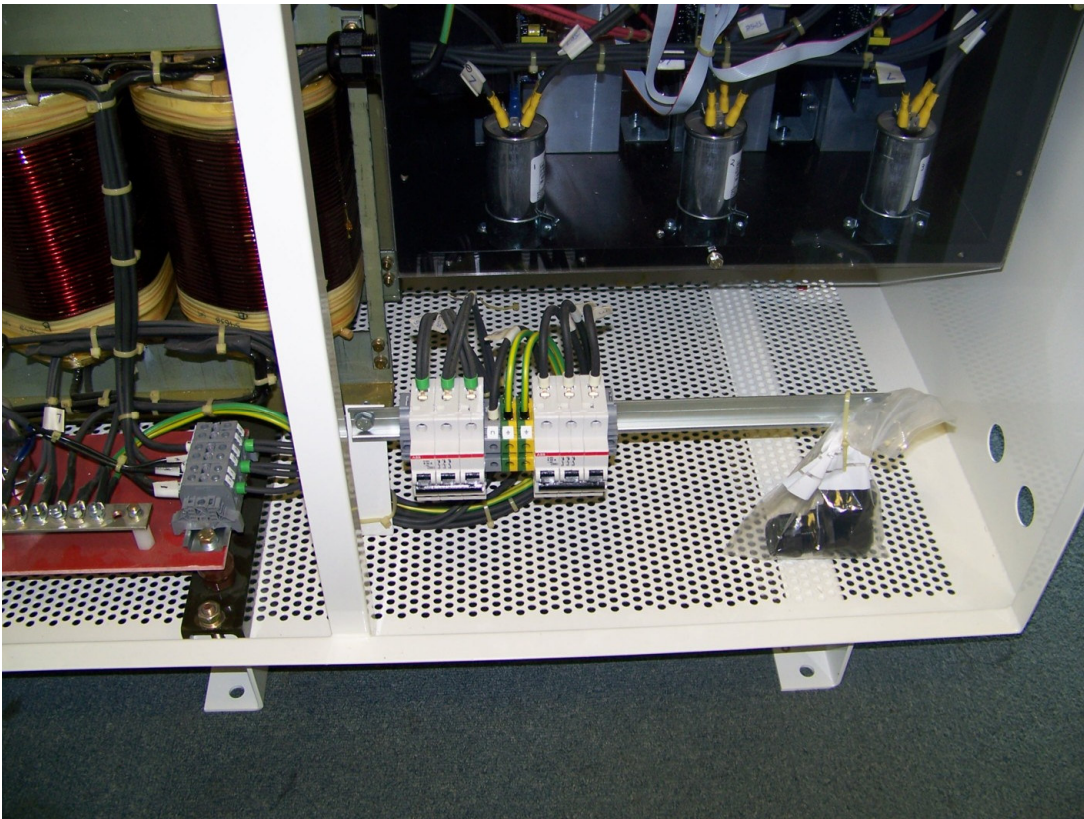
Open Main Door

Step 2

Switch off VRp output circuit breaker

Switch off input circuit breaker

Make sure that unit is off before proceeding to next step.



Step 3

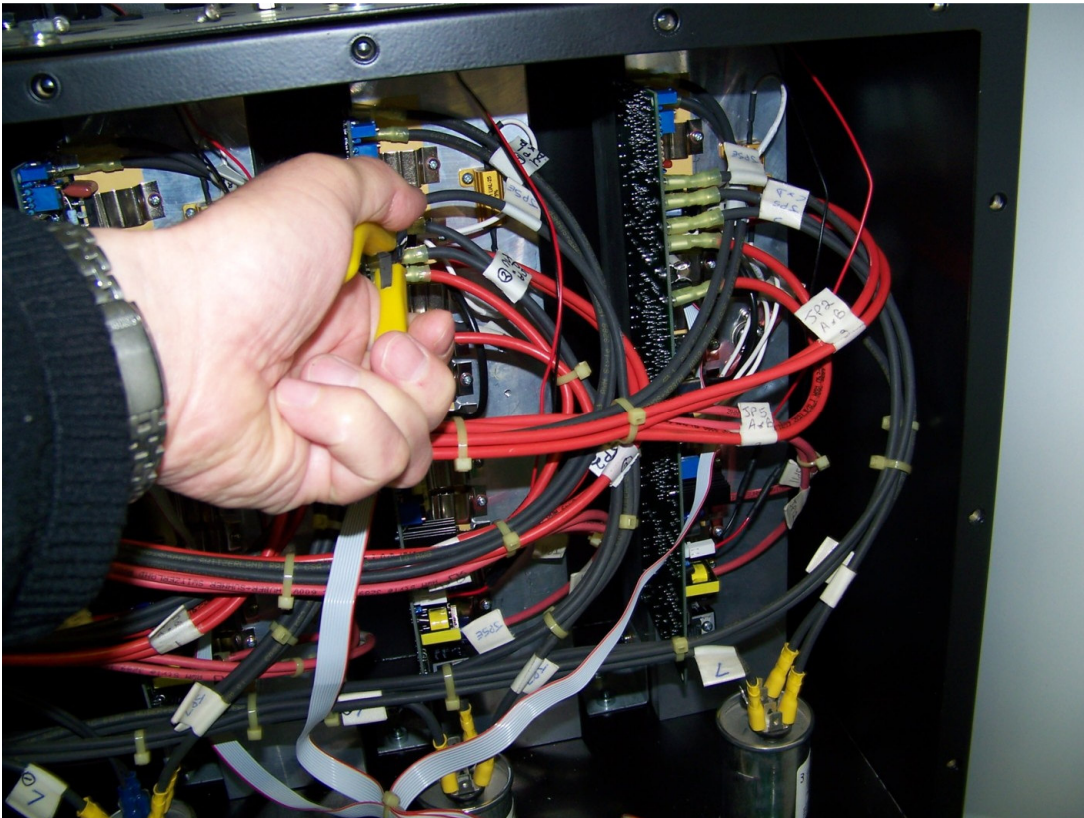
Remove 16 10mm bolts that hold front cover. Use 10mm nutdriver



Step 4

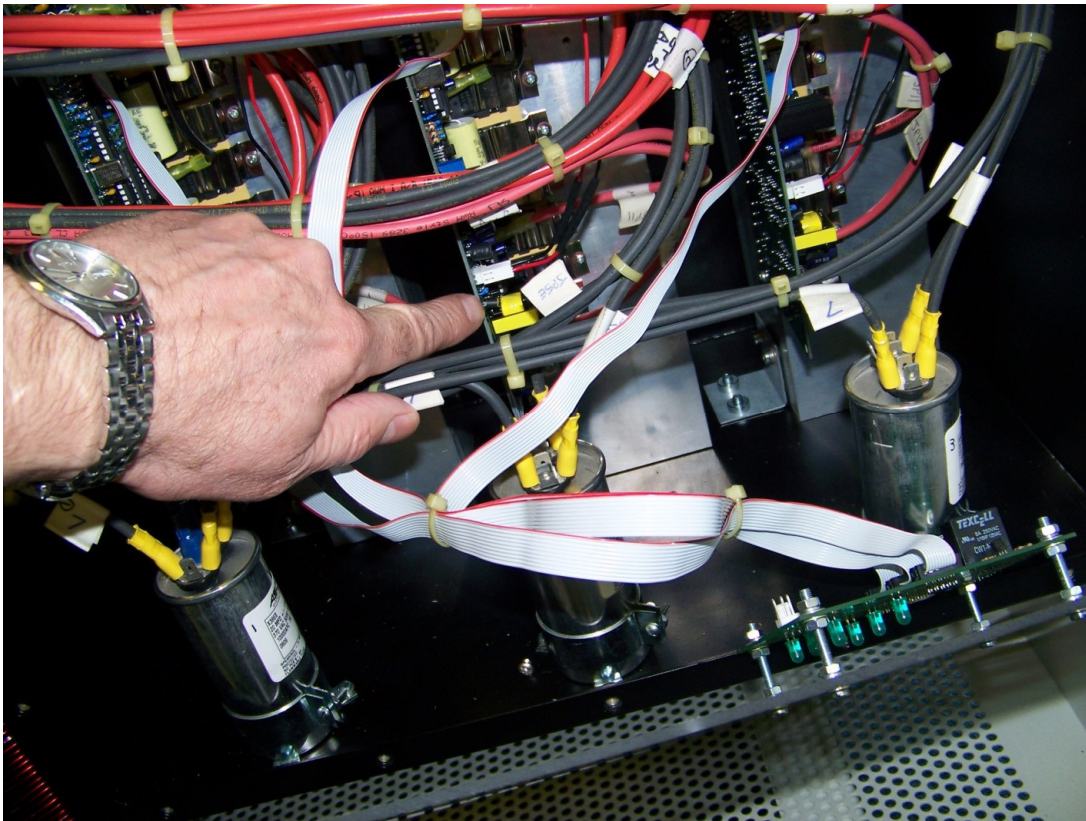
Remove all fast-on terminals from PCB. Begin with front five (5) terminals. Then remove seven (7) terminals closest to heatsink.

Use a needle nose pliers



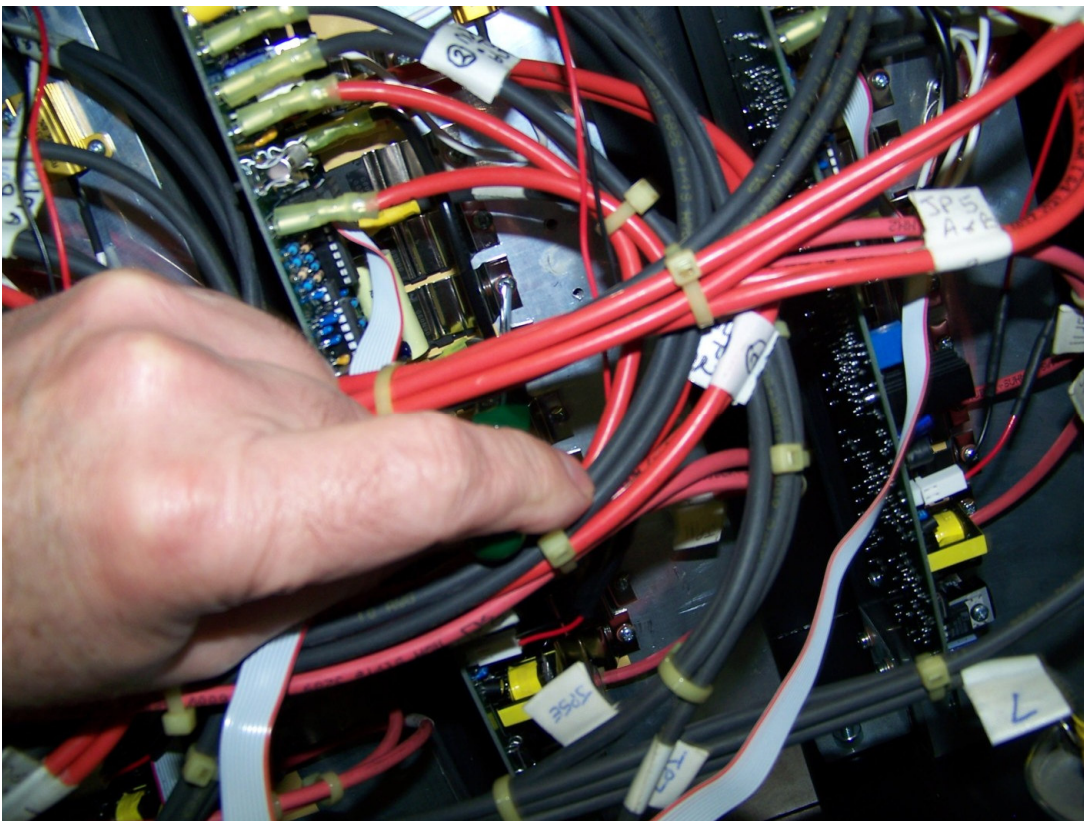
Step 5

Remove fan connector from PCB header.



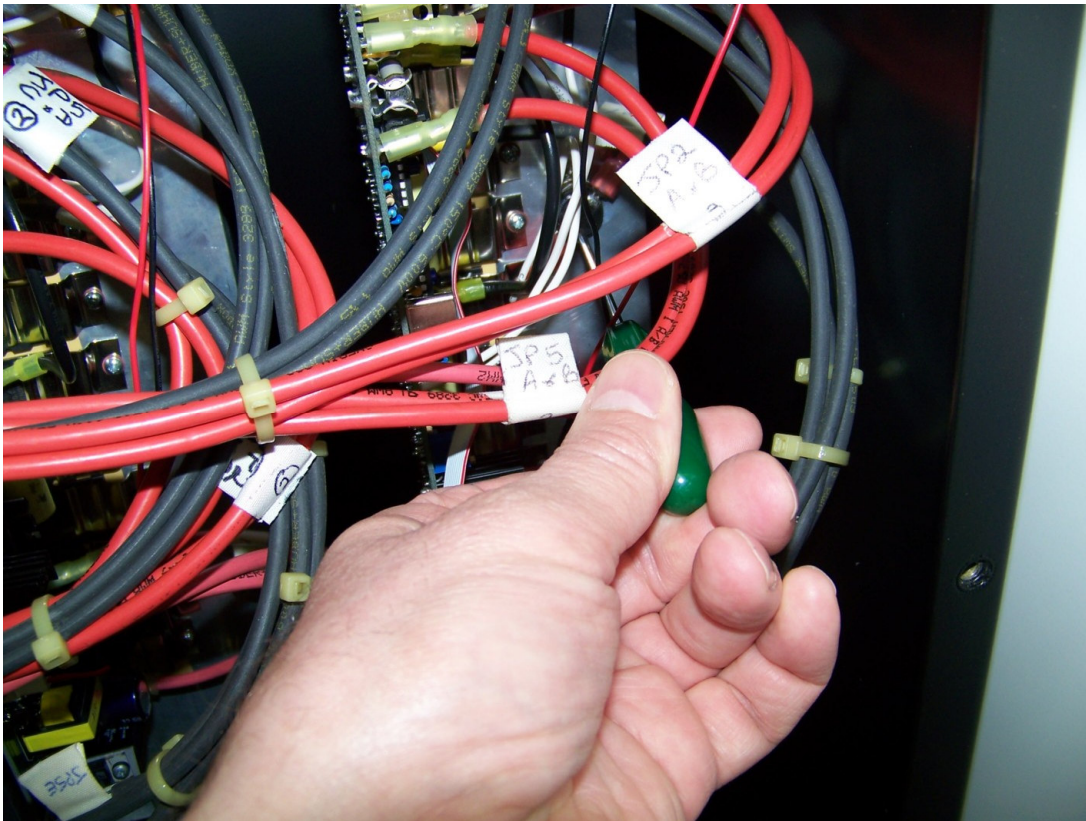
Step 6

Remove 11 device clips using a phillips screw driver. Save screws and washers.



Step 7

Remove snap-action thermostat from heatsink. Use a phillips screw driver. Save screws.



Step 8

Remove the two (2) screws that fasten the PCB to the heatsink. Use angle phillips screw driver as space is limited. Save screws and washers.

Step 9

Remove PCB carefully and put in a static protection bag.

Step 10

Install new PCB by securing with the two screws and washers. Do not tighten yet. Make sure devices are flat against heatsink insulator.

Step 11

Replace device clips, screws and washers taking care not to apply excessive torque that might lead to stripping of threads.

Step 12

Repeat the other steps in reverse. Make sure all connections are verified by comparing to another phase.

Step 13

Restart unit following instructions in installation manual.